



InDesign/Distiller settings for Print

This document will provide instructions for creating the best possible PDF's used for print here at the Union City Daily Messenger. While the following instructions apply to Mac's in general, with a few small variations, will apply to PC's as well. The main difference between the two will be the location of where the Distiller file, or files will be stored. (meaning the file titled **New_Messenger.joboptions**).

At the time of this writing, the file we provide will be titled **New_Messenger.joboptions**. In the future we may see improvements that can be made, and therefore may generate a new Distiller file. If the file provided to you by us has a name other than "New_Messenger.joboptions", just substitute that name in place of New_Messenger.joboptions in this document.

Method 1

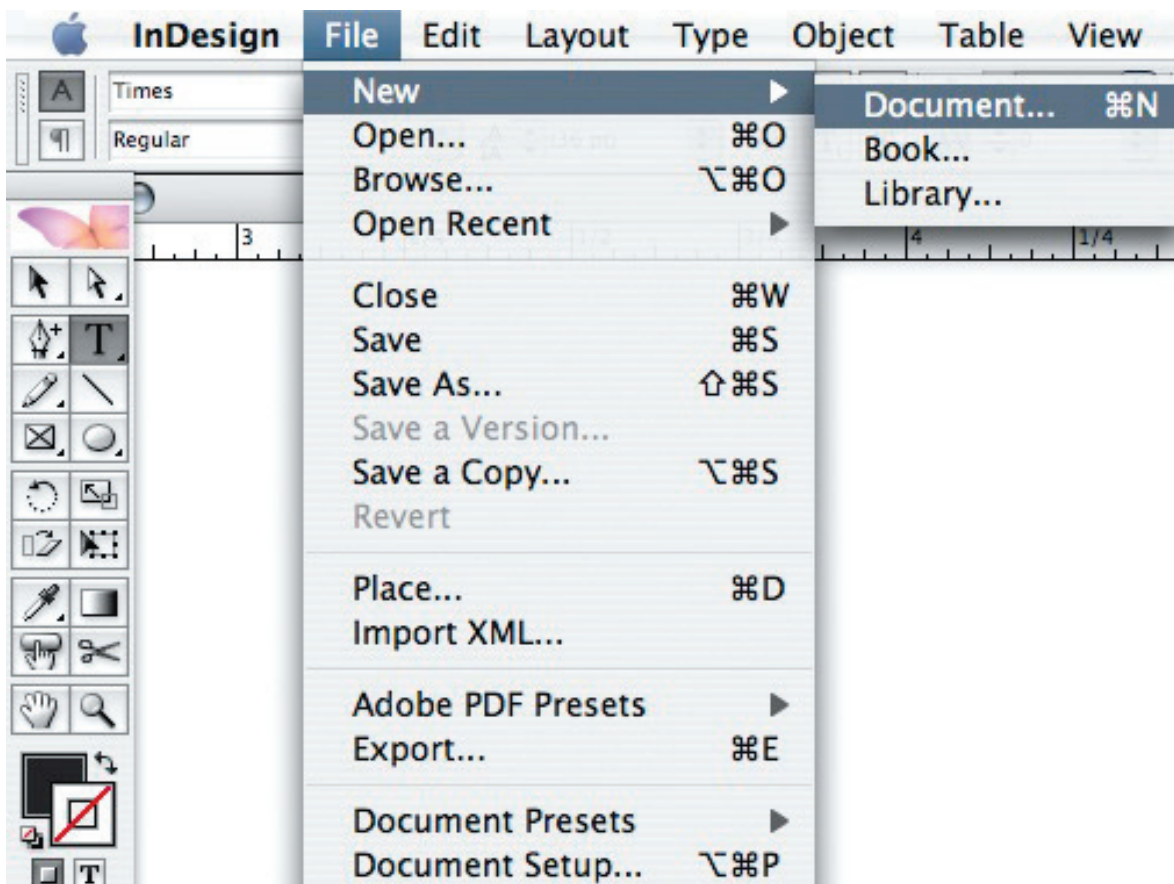
This method would require you to place the Distiller file in a location that it WILL NOT be moved from or deleted. From there you can direct **Distiller** or **InDesign** to that location.

On Mac's we generally recommend your "**Documents**" folder, and on PC's "**My Documents**" folder. It really doesn't matter where it is placed as long as it stays there from that point forward, AND you know where to find it. You will have to direct **InDesign** and or **Distiller** to this file so you must know where it is at.

Step 1. Have the files we provided saved somewhere on you computer, (you desktop will be fine for the moment).

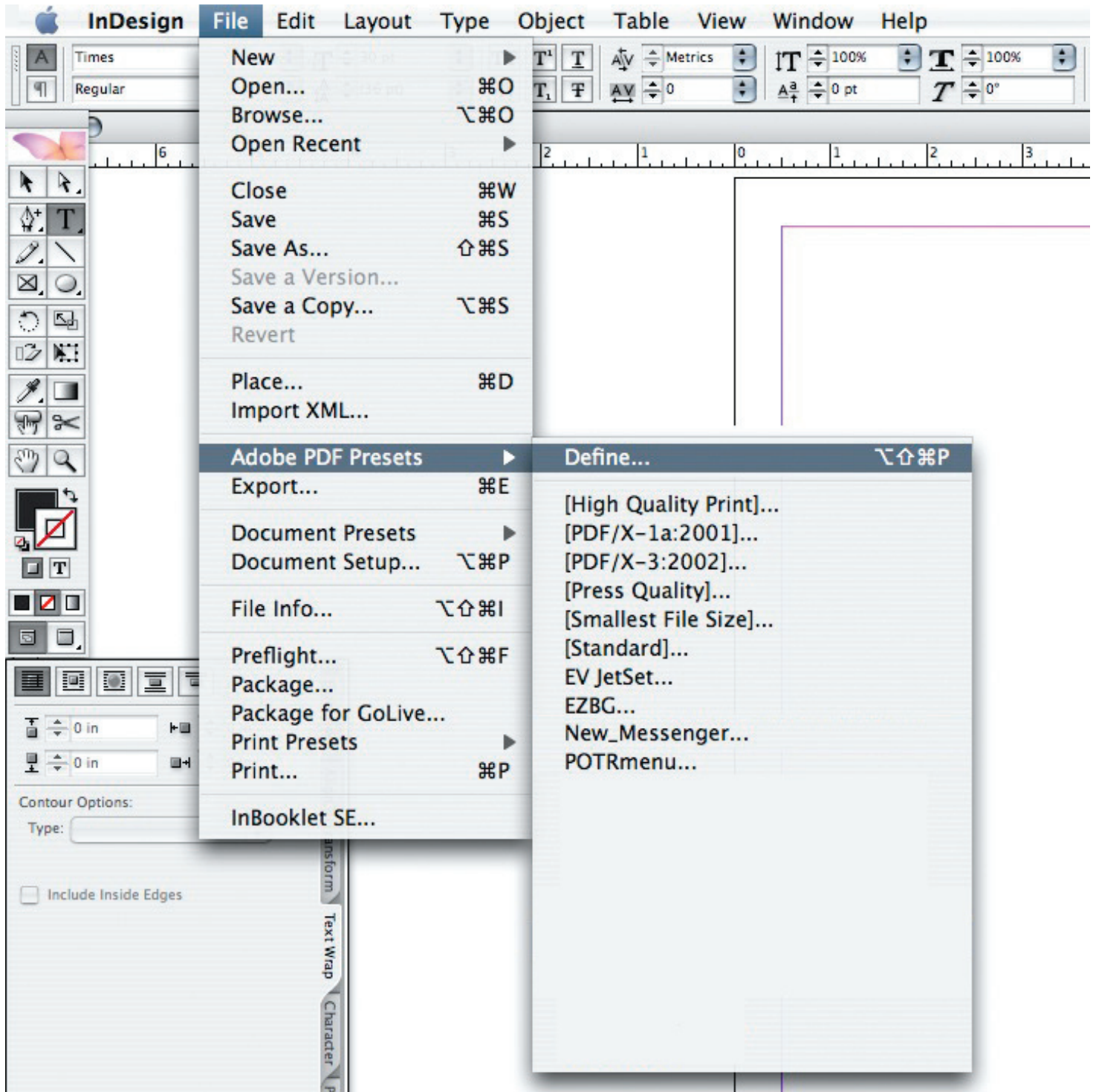
Step 2. The next step will be placing the Distiller file provided, in either your "**Documents**" folder (on Mac's) or in "**My Documents**" folder on PC's.

Step 3. With **InDesign** open, just open any document, or create a new one via, **File / New / Document**. It really makes no difference in the size or specifics of the new document as we are only using this as a starting point.



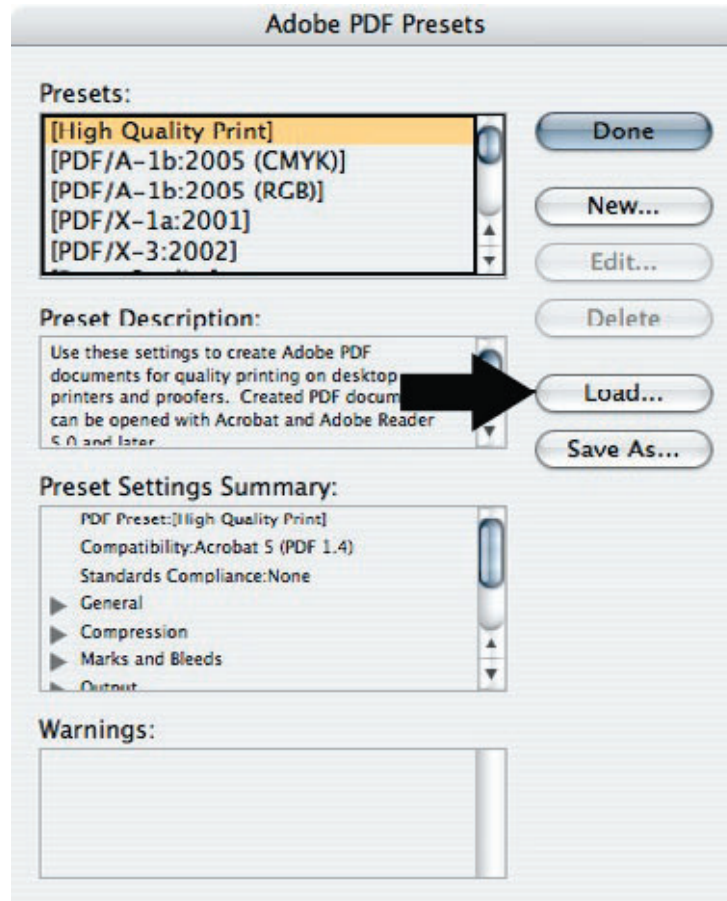
Step 4. Once you have the new document, or existing document open, you'll need to tell **InDesign** what **Distiller** file to use to create your PDF.

Select **File / Adobe PDF Presets / Define**.



This will bring up a window titled **Adobe PDF Presets**.

Step 5. When presented, select **Load**



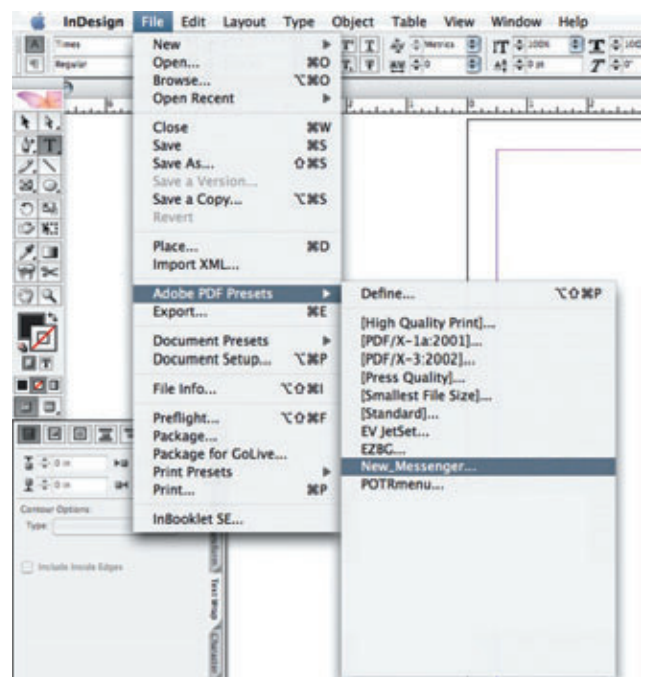
Direct **InDesign** as to where to find the file (in your **Documents** folder), highlight *New_Messenger.joboptions*, and click Open.

At this point you should be back to the window titled **Adobe PDF Presets** as shown above. Just click **Done**.

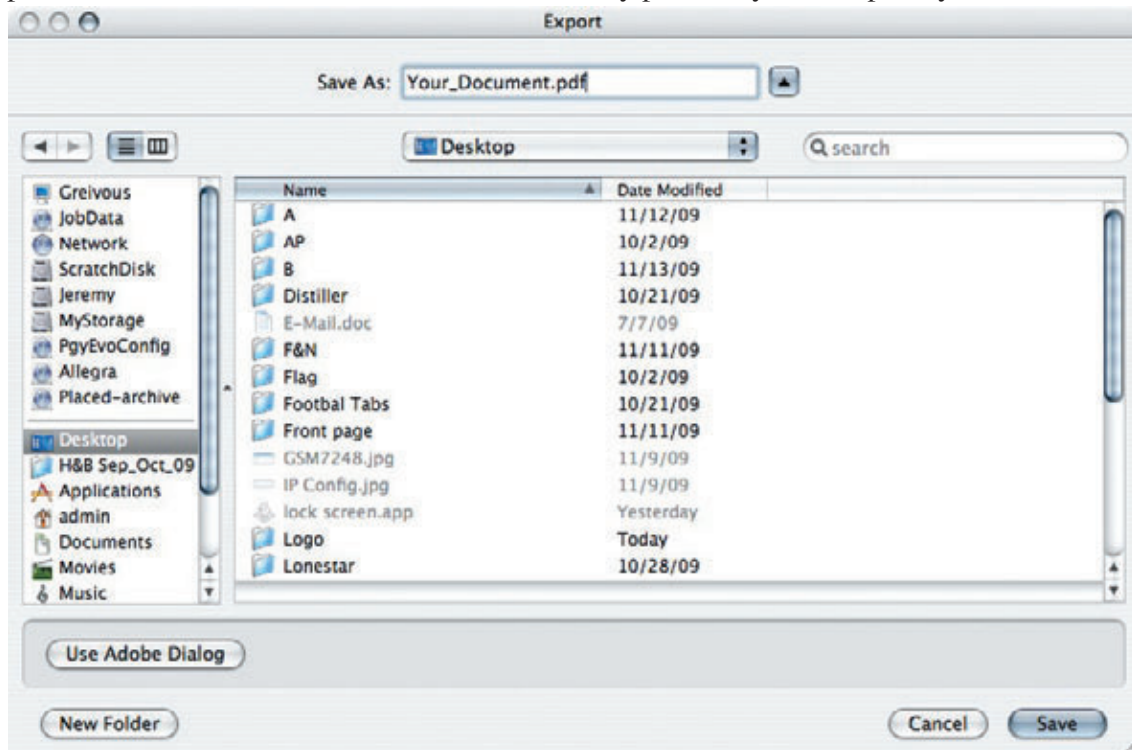
What we have just done is tell **InDesign** what file we want placed in our **Adobe PDF Presets Listing**. (see below)

Step 6. With your new document, or existing document open, you need to tell **InDesign** which **Distiller** file to use to create your PDF.

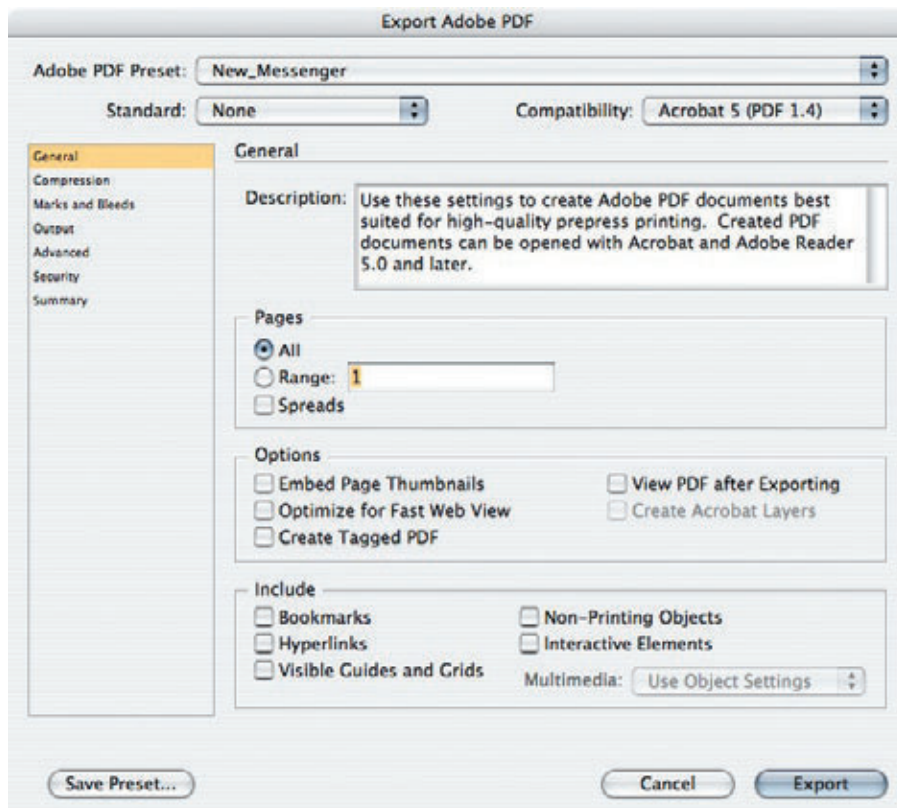
Select **File / Adobe PDF Presets / New_Messenger**.



Step 7. At this point you'll be asked what location you wish to save your PDF to. In this example, name your file, select Desktop, and click **Save**. You can of course direct it to any place on your computer you like.



You'll next see a window similar to the one below. All that needs to be done to complete our PDF generation is select either "All", (which will output all of your pages as one continuous PDF), or "Range" and click **Export** (which will output only the pages you wish). **Example** 1-14 outputs page 1 through page 14 as one continuous PDF, or 1,4,7,8,9 which will only output the pages you have defined and separated by commas.



Your Finished.

Method 2

Alternative Placement of Distiller Files

While this method will produce the same end results as Method 1 outlined above, this requires a few less steps to setup **InDesign** to output your PDF's. Also note that the location listed below is for Mac's.

Step 1. Have the files we provided saved somewhere on you computer, (you desktop will be fine for the moment),

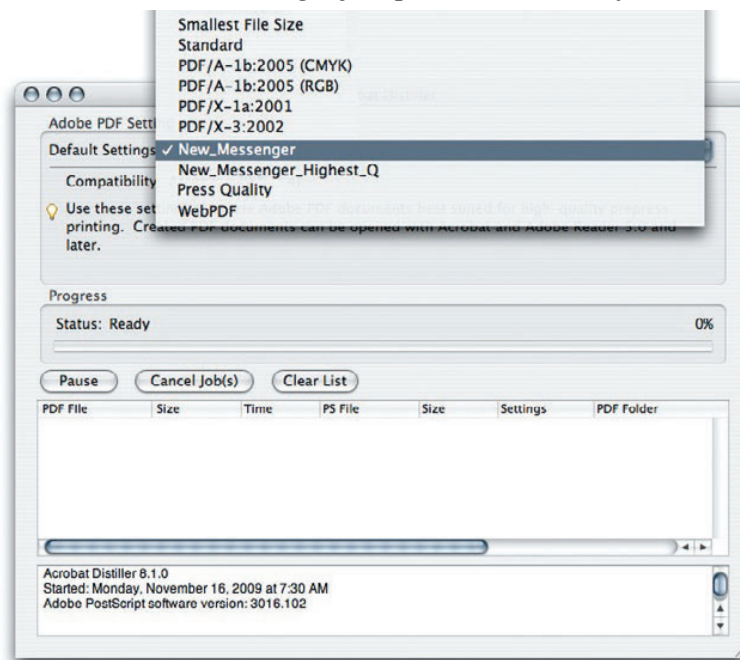
Step 2. The next step will be placing the Distiller file provided in it's proper location.



Navigate to the location listed above, and place the Distiller file in the “Settings” folder as shown.

At this point it would be a good idea to open **Adobe Distiller** to check if our files is in the correct location.

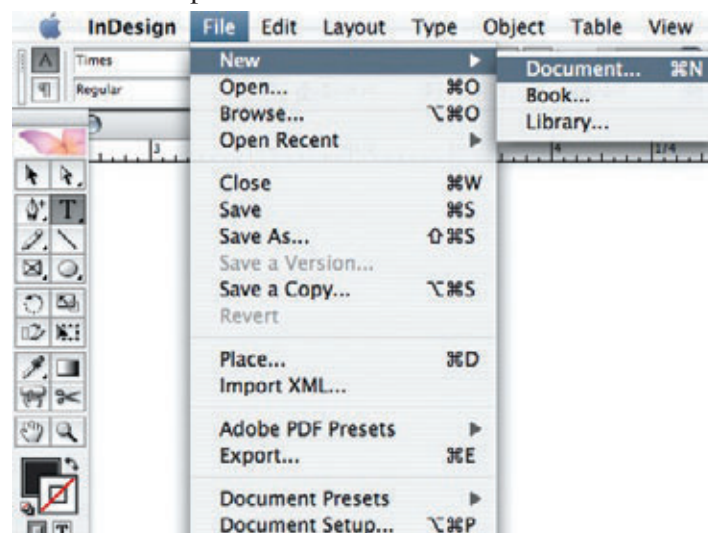
Open **Distiller**, click on the dropdown menu that says, “**Default Settings**”, and select the “**New_Messenger**” file that we just installed. From there forward, “New_Messenger.joboptions” should be your default **Distiller** setting.



From here, **InDesign** should now have the New_Messenger.joboptions listed in it's **Adobe PDF Presets** list.

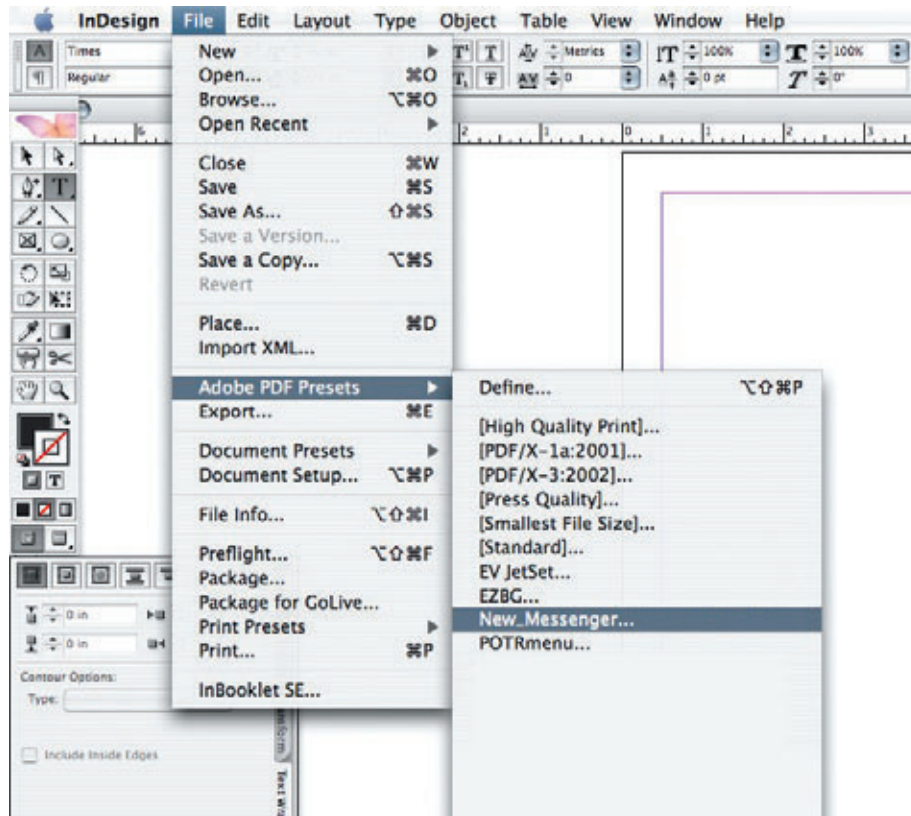
Step 3. With InDesign open, just open any document, or create a new one via, **File / New / Document**.

It really makes no difference in the size or specifics of the new document as we are only using this as a starting point.

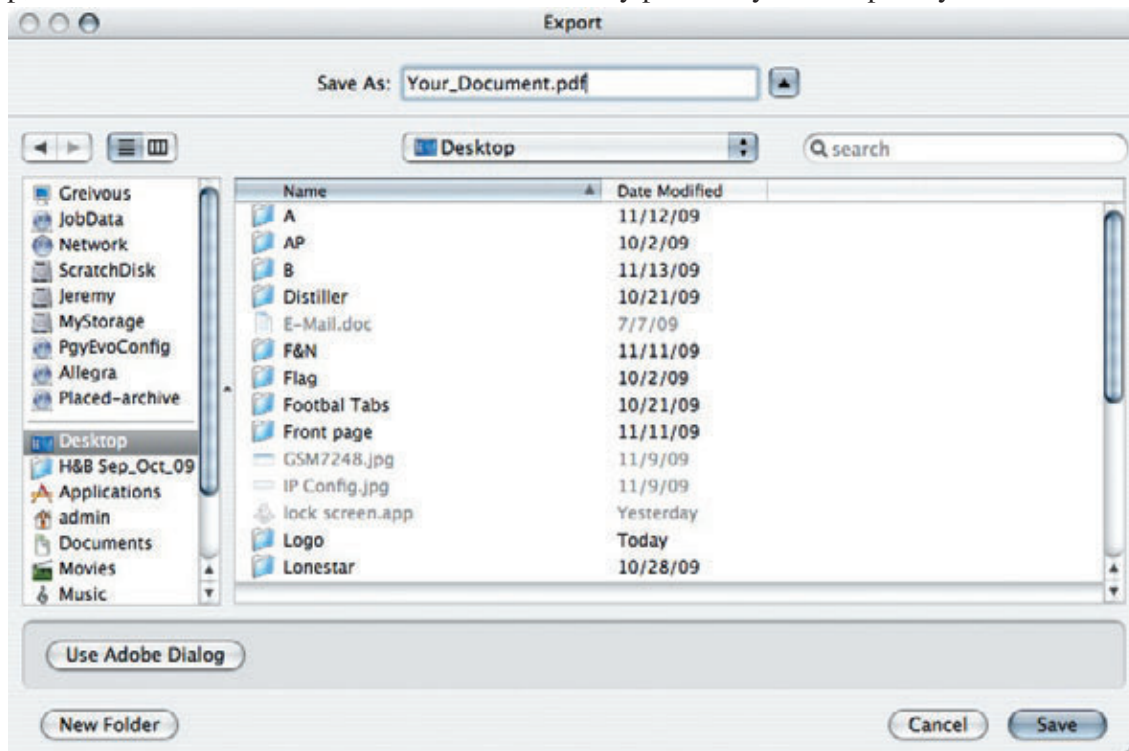


Step 4. Once you have the new document, or existing document open, all we need to do is tell **InDesign** which Distiller file to use to create your PDF.

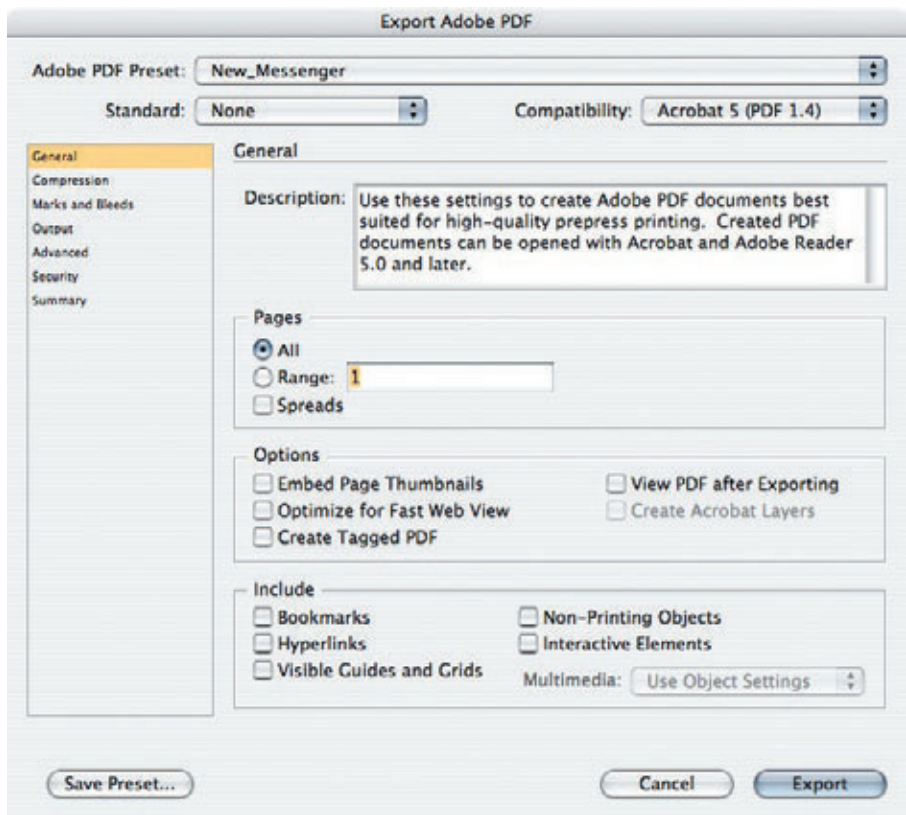
Select **File / Adobe PDF Presets / New_Messenger**.



Step 5. At this point you'll be asked what location you wish to save your PDF to. In this example, we name our file, select Desktop, and click **Save**. You can of course direct it to any place on your computer you like.



You'll next see a window similar to the one below. All that needs to be done to complete our PDF generation is select either **"All"**, (which will output all of your pages as one continuous PDF), or **"Range"** (which will output only the pages you wish). **Example** 1-14 - page 1 through page 14 as one continuous PDF, or 1,4,7,8,9 - which will only output the pages you have defined and separated by commas.



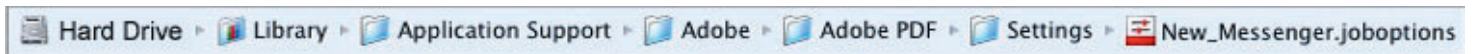
Your Finished.

Method 3

Method 3 is probably the most difficult to set up, but is by far the best method. It involves setting up **InDesign** to print a PostScript® File, then distilling that file in **Distiller**.

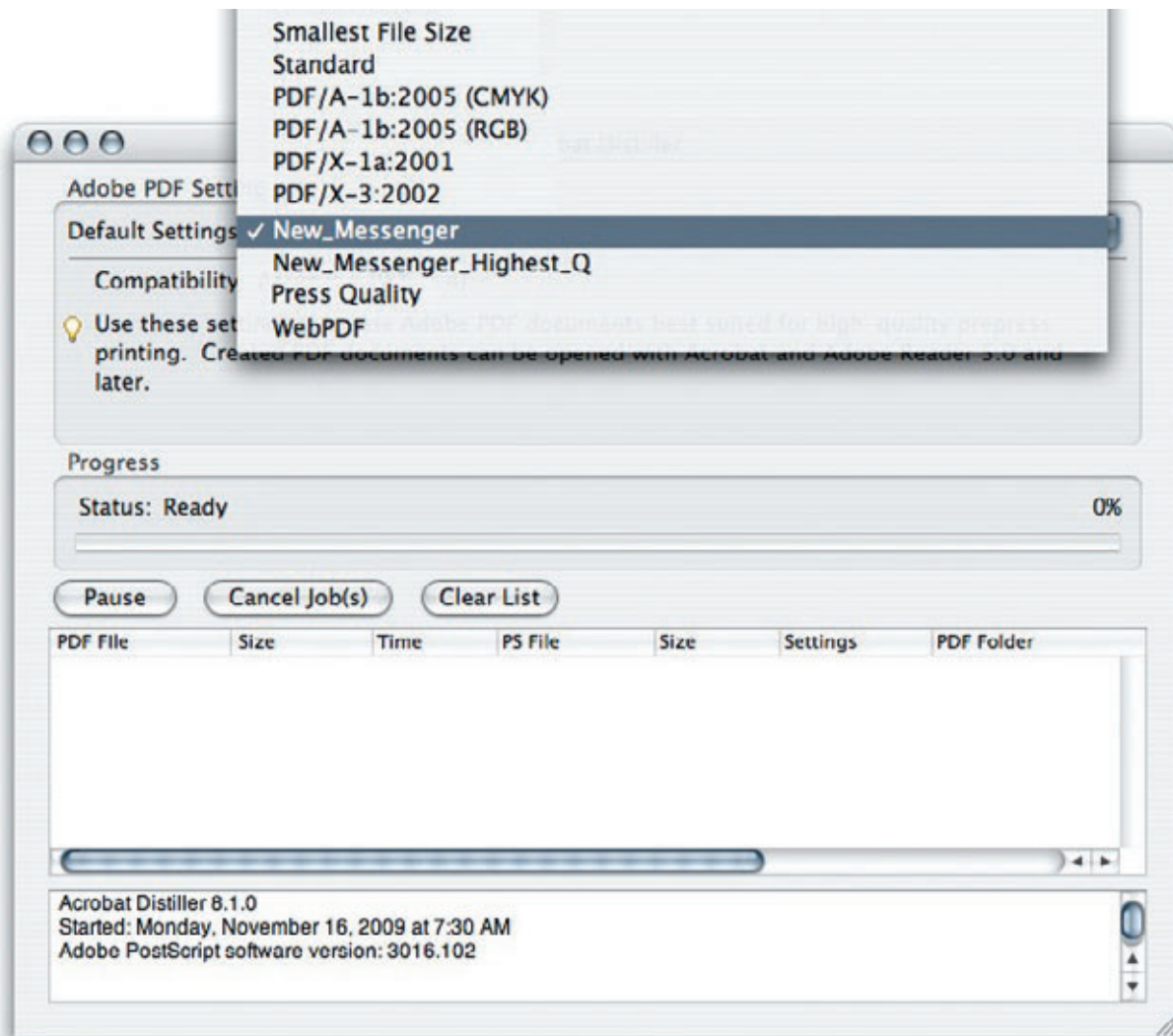
Place our New_Messenger.joboptions in the following location seen below. (same as **Steps 1&2** from **Method 2**)

Step 1. Have the files we provided saved somewhere on your computer, (your desktop will be fine for the moment),
Step 2. The next step will be placing the Distiller file provided in its proper location.



Navigate to the location listed above, and place the Distiller file in the “Settings” folder as shown.

At this point it would be a good idea to open **Adobe Distiller** to check if our file is in the correct location. Open **Distiller**, click on the dropdown menu that says, “**Default Settings**”, and select the “**New_Messenger**” file that we just installed. From there forward, “New_Messenger.joboptions” should be your default **Distiller** setting.

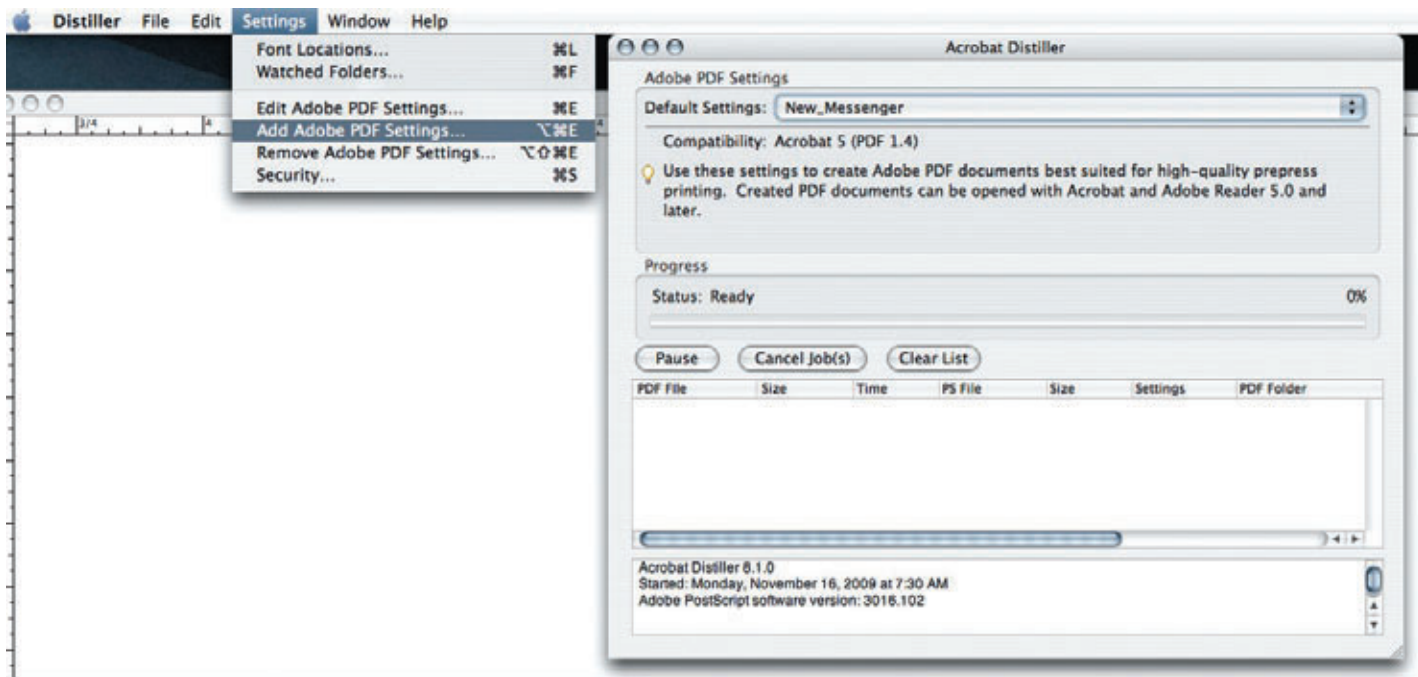


Here is the alternative to the placement method mentioned above.

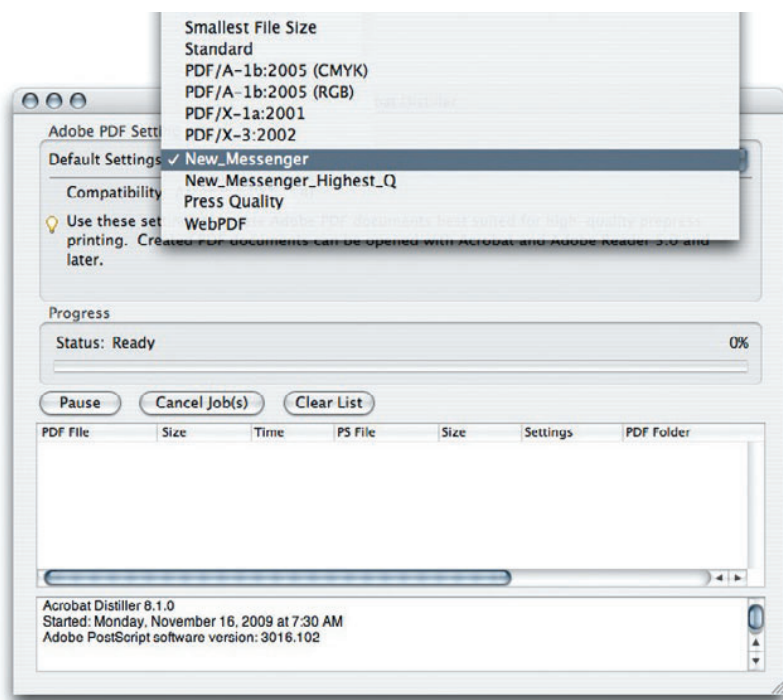
Step 1. Have the files we provided saved somewhere on your computer, (your desktop will be fine for the moment).

Step 2. The next step will be placing the Distiller file provided in either your “**Documents**” folder (on Mac’s) or in “**My Documents**” folder on PC’s.

Step 3. Open Distiller, click on **Settings / Add Adobe PDF Settings**. Direct Distiller to your **Documents** folder and select the “**New_Messenger.joboptions**” file that we just installed, and click **Open**. Now your **New_Messenger.joboptions** should be listed as your default setting. From there forward, “**New_Messenger.joboptions**” should be your default Distiller setting.



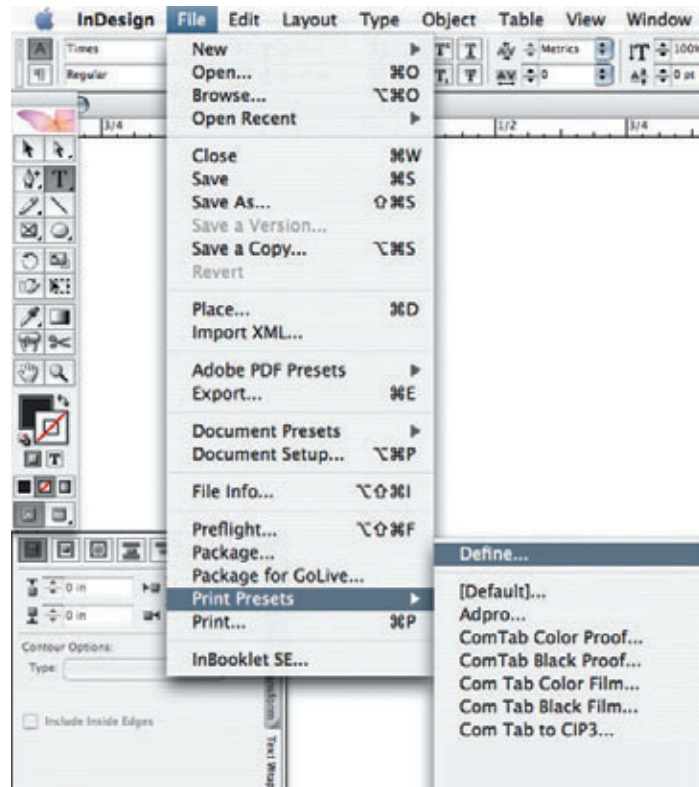
If this is not the case, click on the dropdown menu that says, “**Default Settings**”, and select the “**New_Messenger**” file that we just installed.



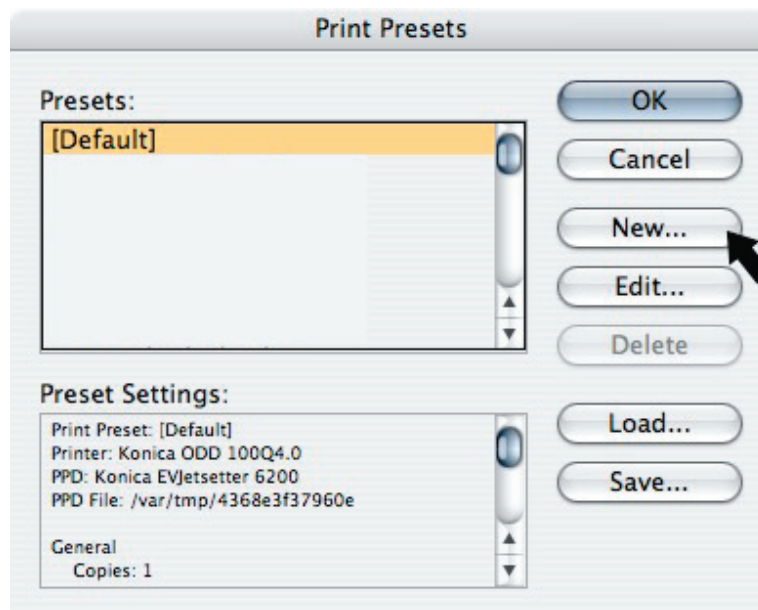
- All we have done in either of the two placement methods listed above is tell **Distiller** which file to use as our default setting for generating a PDF.

Now Setting up InDesign to print a PostScript file

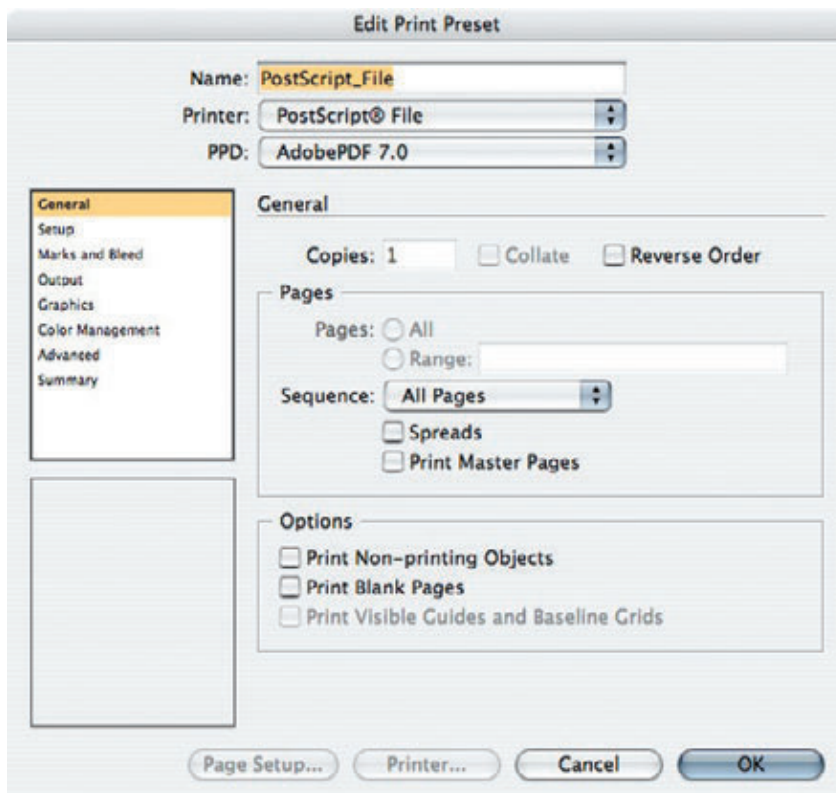
Step 1. With InDesign open, go to **File / Print Presets / Define**



Step 2. When the **Print Presets** window opens, click **New**.



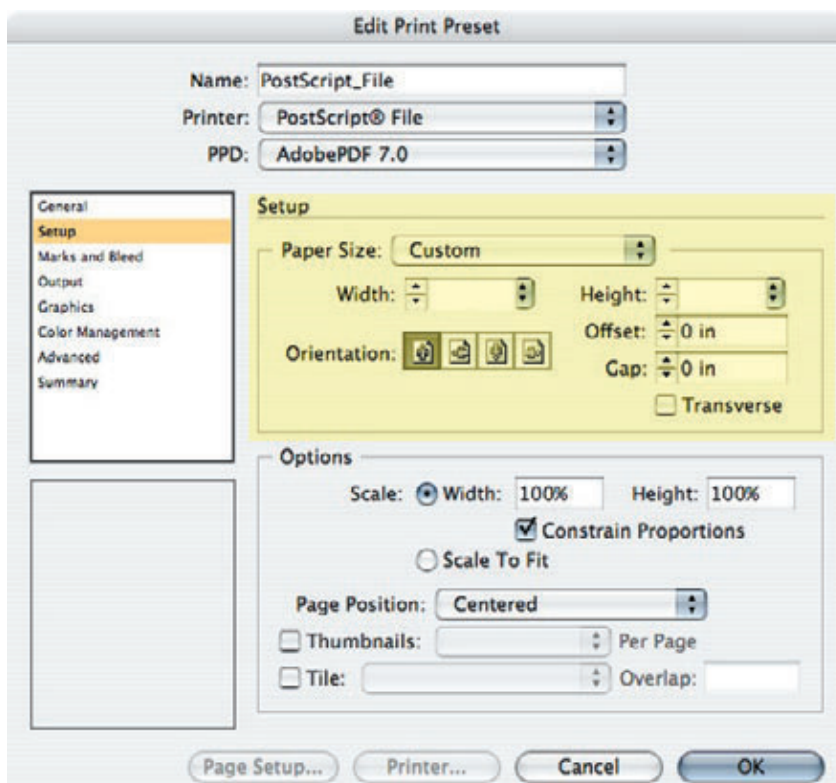
Step 3. Name your Preset **PostScript_File**. Select **PostScript®File** as your printer, and **AdobePDF 7.0** (or the highest version listed) as your PPD.



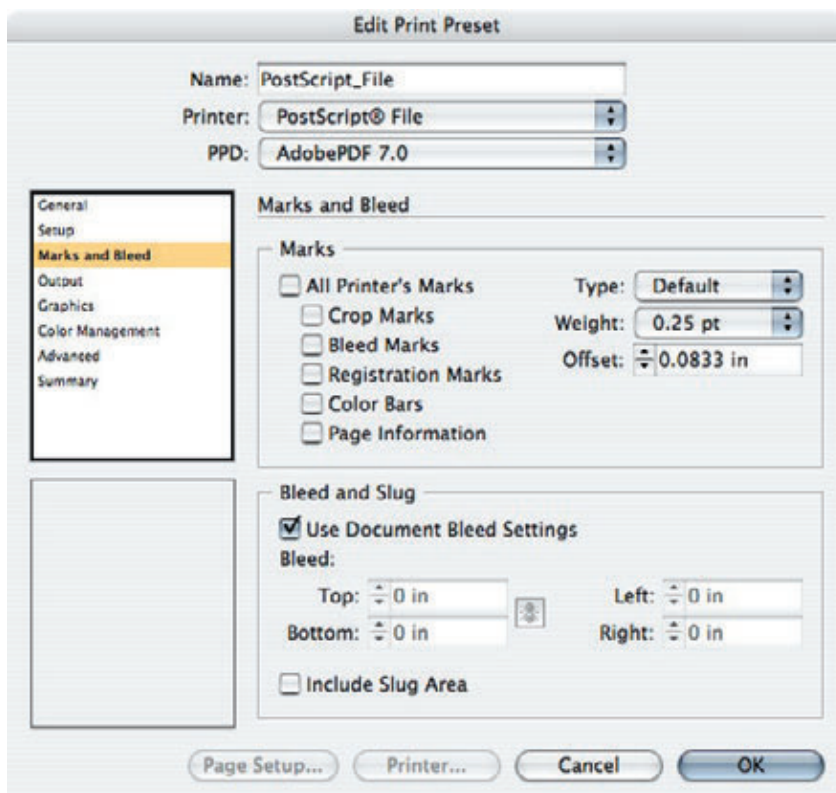
Step 4. With the exception of the **Setup** option, each of the following ... **Marks and Bleeds, Output, Graphics, Color Management, and Advanced** should match the following screen shot exactly.

• Note that the **Width and Height** in the **Setup** portion (in yellow) I have left blank. **This should be filled with the Document size of YOUR publication or job.**

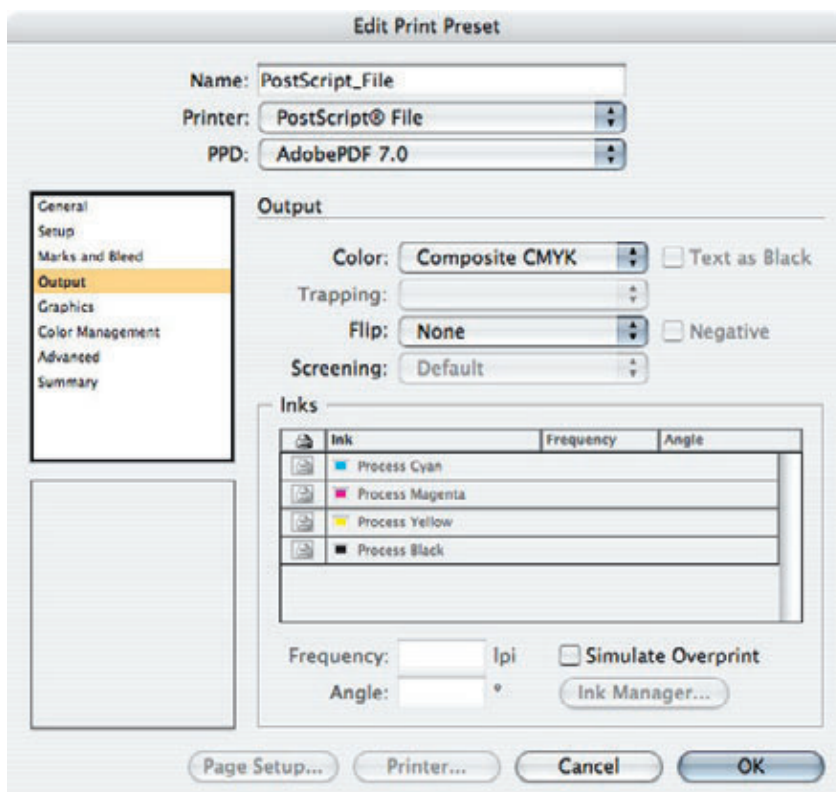
Make sure **Width** and **Height** are set to 100% and **Constrain Proportions** is checked. **Page Position** is “Centered”.



Use Document Bleed Settings is checked



Select Composite CMYK as your Color



Send Data should read All.

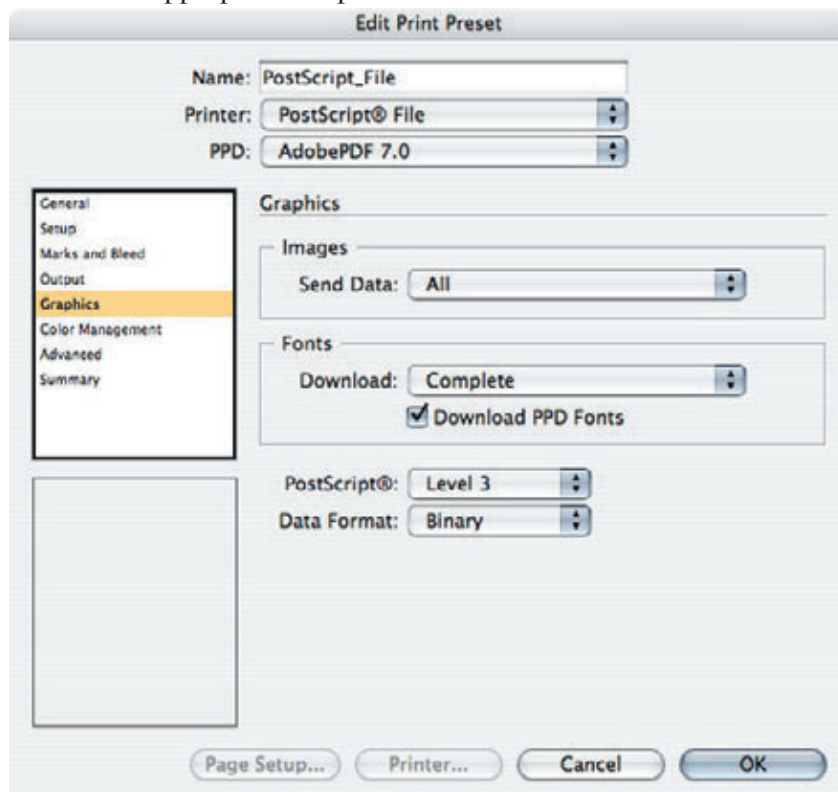
Download should read Complete.

Put a check mark next to **Download PPD Fonts**.

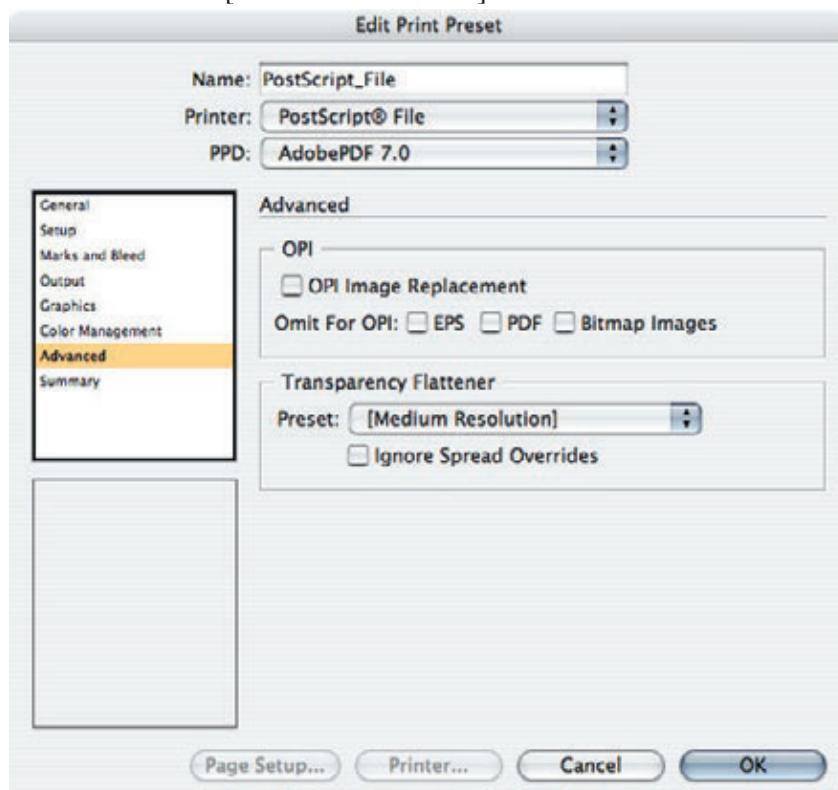
Select **PostScript® Level 3**

Data Format Binary

If these are not selected, click on the appropriate dropdown menu and select each.



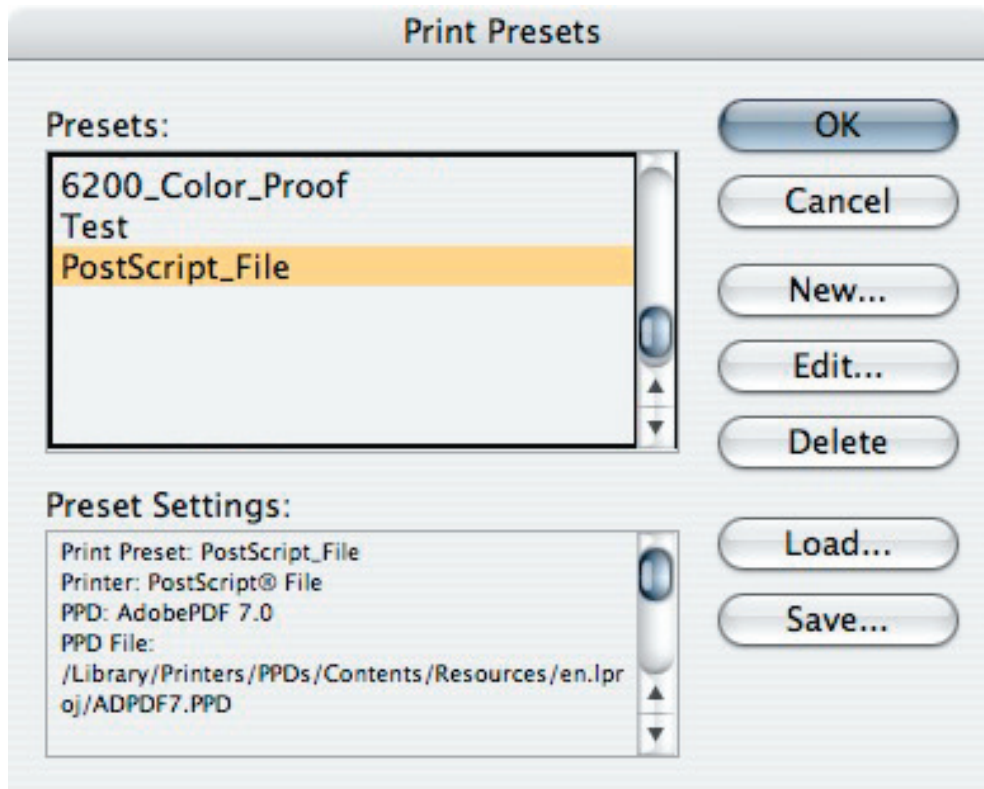
All boxes can be left unchecked and select [Medium Resolution].



The last sub menu of **Summary** will just show the options you have selected. No need for explanation.

Click OK, and you will be taken back to the previous window. You should now see “PostScript_File” listed as one of your **Print Presets**.

Click OK again here.



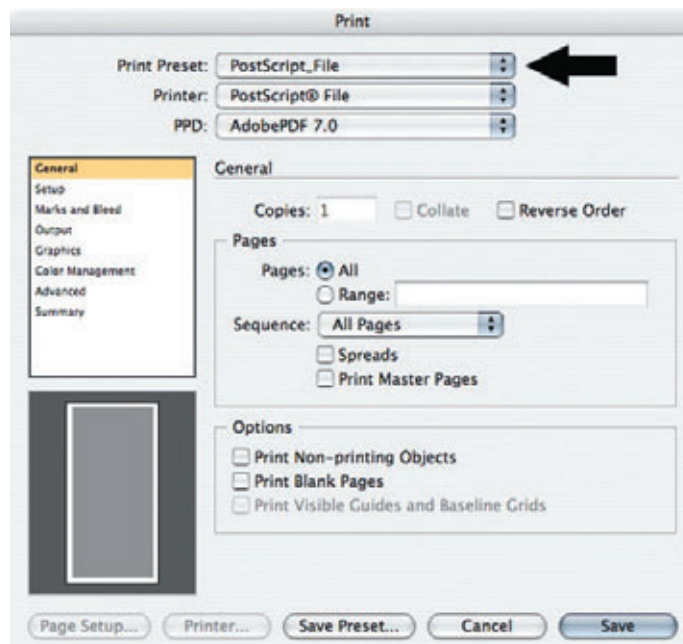
So far we have given **Distiller** a file (New_Messenger.joboptions) to use as it’s default setting to create a PDF. Then we setup **InDesign** to print a PostScript®File.

What to do now, is print a PostScript®File of your document form within **InDesign**, and then distill that file in **Distiller**.

With your document open, select **File / Print**.

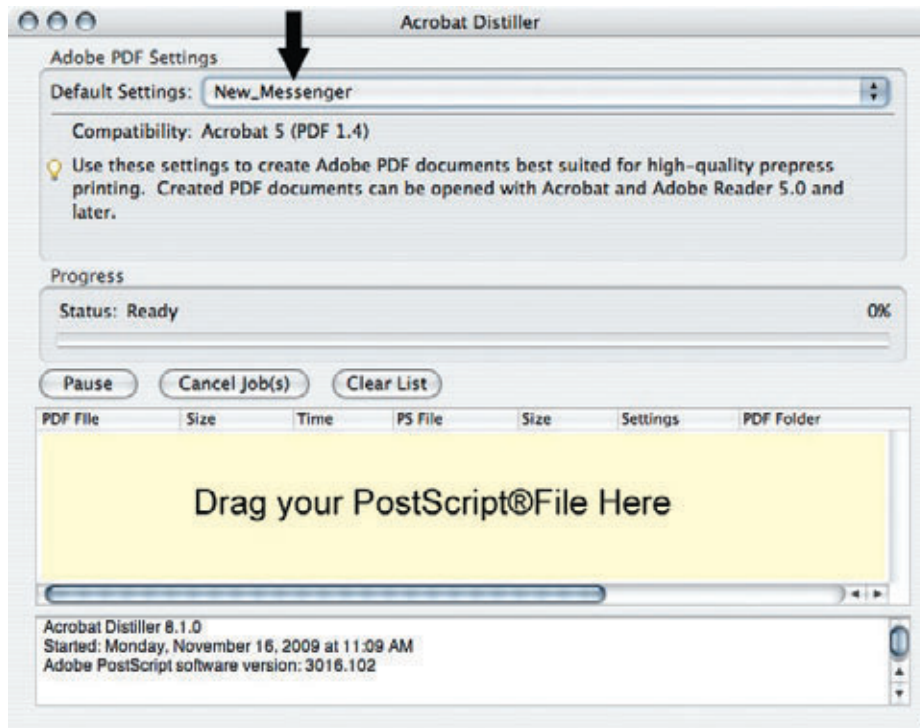
When the print dialog box comes up, select **PostScript_File** from the dropdown menu, and click **Save**.

Direct **InDesign** to where you wish to save to (Desktop for example), and click **Save** again.



You should now have a PostScript®File on your desktop.

Open **Distiller**. You should have New_Messenger listed as your **Default Settings**. Again, if not, click on the drop-down menu and select it.



Now, just drag and drop the PostScript®File that you just created into the window shown here in yellow.

Distiller should take care of everything at that point, and you'll be left with a PDF on your desktop (or the same location as the file you printed from InDesign)

If you do not have a new PDF created, go back and review all the steps in the setup, one by one to see what you may have missed. Usually it happens to be something very simple that was overlooked.